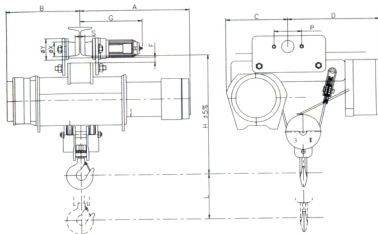


# BIG ELEPHANT WIRE ROPE HOIST

TYPE : LOW-HEAD MONORAIL • SPEED : SINGLE SPEED (STANDARD)



CAP			1	2	3	5	7.5	
Holding	M/min	50Hz	6.0	5.6	5.4	5.4	4.2	
		60Hz	7.2	6.8	6.5	6.5	5.2	
	Kw	50Hz	1.5	3.7	5.5	7.5	7.5	
		60Hz					11	
	Traversing	M/min	50Hz	15	15	14	13	13
			60Hz	18	18	17	16	16
Kw		50Hz	0.37	0.37	0.37	0.75	1.1	
		60Hz						
Wire rope	Diameter		Ø6	Ø8	Ø10	Ø12	Ø14	
	Struct		Ø X 37					
	Nos		4					
	Ed percent		High / Low speed : 40% / 25% ED (JEM 1393 II)					
Ambient temperature			-10°C to 40°C .					
Protective construction			Weather proof type (Attach rain cover if using outdoors) JP 44 (IP 54) equivalent					
Power supply			3Ø 220V-600V 60Hz/50Hz					

CAP	TYPE	Approximate Dimension (mm)											Kg	
		L	A	B	C	D	F	X	Y	G	S	H		P
1 T	BLAN-010	6	485	435	340	360	30	74	118	365	15	590	163	190
		9	565	515										220
		12	645	595										250
2 T	BLAN-020	6	620	435	406	430	35	85	128	415	122	730	174/390	263
		9	695	510										293
		12	770	585										323
3 T	BLAN-030	6	700	490	400	585	35	95	138	395	63	770	178/390	390
		9	800	590										430
		12	900	690										470
5 T	BLAN-050	6	780	560	530	590	15	135	168	480	57	800	216	560
		9	895	670										600
		12	1000	775										640
7.5 T	BLAN-075	6	975	695	665	620	30	150	180	650	71	1200	217/820	800
		9	1025	770										850
		12	1075	820										900